

**ITEM 46. TRAFFIC TREATMENT – STREETScape IMPROVEMENTS – RIPON  
WAY ROSEBERY**

**TRIM RECORD NO: 2017/354648**

**RECOMMENDATION**

It is recommended that the Committee endorse the installation of the following:

- (A) Footway widening on the western side of Dalmeny Avenue, Rosebery between the points 19 metres and 22.5 metres south of Morley Avenue;
- (B) Footway widening on the eastern sides of Dalmeny Avenue, Rosebery between points 0 metres and 10 metres north and south of Ripon Way;
- (C) Footway widening on the both sides of Ripon Way, Rosebery between points 0 metres and 10 metres east of Dalmeny Avenue;
- (D) 'In Road' kerbside garden beds along the southern side of Ripon Way, Rosebery between the points 18 metres and 22 metres, 28 metres and 32 metres, 64.4 metres and 70.4 metres, 95.1 metres and 99.1 metres, 107 metres and 111 metres, 115.5 metres and 119.5 metres, 134.2 metres and 138.2 metres, 160 metres and 163 metres, 170.1 metres and 174.1 metres, 184.3 metres and 188.3 metres, 202.6 metres and 206.6 metres, 218.2 metres and 222.2 metres, 245.4 metres and 249.4 metres, and 254.5 metres and 258.5 metres east of Dalmeny Avenue; and
- (E) 'In Road' kerbside garden beds along the northern side of Ripon Way, Rosebery between the points 60.4 metres and 64.4 metres, 87.8 metres and 91.8 metres, 101.3 metres and 105.3 metres, 124.1 metres and 128.1 metres, 138.2 metres and 142.2 metres, 151.4 metres and 154.4 metres, 179.2 metres and 183.2 metres, 201.5 metres and 205.5 metres, 217.1 metres and 221.1 metres, and 255.7 metres and 259.7 metres, east of Dalmeny Avenue.

**VOTING MEMBERS FOR THIS ITEM**

<b><i>Voting Members</i></b>	<b><i>Support</i></b>	<b><i>Object</i></b>
City of Sydney		
Roads and Maritime Services		
NSW Police – Redfern LAC		
Representative for the Member for Heffron		

**DECISION**

**BACKGROUND**

The City's Sustainable Sydney 2030 vision includes commitments to increase tree canopy cover by 50% by 2030, to green our City and improve the amenity of our streets. In 2011 Council adopted the City's Street Tree Master Plan which identifies a range of in-road tree planting sites such as Ripon Way, between Dalmeny Avenue and Bannerman Crescent, Roseberry.

Additionally, footway widening treatments at the intersection of Ripon Way and Dalmeny Avenue, will increase canopy cover, residential amenity and will increase safety at the intersection by reducing the distance a pedestrian needs to cross the road and slowing down traffic at the intersection.

## **COMMENTS**

Ripon Way, Rosebery has a 12.8 metre wide carriageway which can allow for garden beds with in-road trees to be planted in the kerbside lane without impacting traffic flow.

The proposed streetscape improvements include planting 27 street trees in new in-road garden beds along the kerb space of Ripon Way at various locations. This treatment is consistent with the City's Greening Sydney Plan objective to increase tree canopy cover by 50% and the City's Sustainable Sydney 2030 vision.

Currently the kerb space in Ripon Way is unrestricted for parking. The proposal to plant trees in the kerb side lane will reduce on-street parking from 53 spaces to 40 spaces. However, all the properties in the street have off-street parking so the proposal will have minimal impact. It is noted that permit parking cannot be provided in this street.

Swept path analysis has been conducted to ensure unobstructed access to driveways along the street is maintained.

The proposed footpath widening treatments at the intersection of Ripon Way and Dalmeny Avenue, will not only provide additional landscaping improvements, but will also improve pedestrian safety by narrowing the road to reduce the crossing distance and reduce traffic speeds at the intersection. The footpath widening treatments at the intersection will not impact exiting kerb side parking.

## **CONSULTATION**

The City consulted local residents and businesses in the area on a proposal which included footpath widening treatments on the western side of Dalmeny Avenue. There were 39 letters sent out with eight responses supporting the proposal and six responses opposing the proposal.

Responses supporting the proposal were in favour of the increased amenity and believed the proposal would reduce vehicle speeds and make the street safer. Responses opposed to the proposal were concerned about the loss of parking outside homes and particularly next to shops on the western side of Dalmeny Avenue.

As a result of the responses, the proposal was amended to include a smaller footpath widening on the western side of Dalmeny Avenue, which would reduce the impact in front of the shops while still improving crossing distances and visibility for pedestrians.

Given the major benefits to the local residential community resulting from increased tree canopy in the street, reduction in vehicle speeds and improvement to pedestrian accessibility and safety crossing the street, the City proposes to proceed with the proposal. The City also believes the above benefits outweighs the reduction to on-street parking resulting for the proposal - especially as all properties in the street have off-street parking.

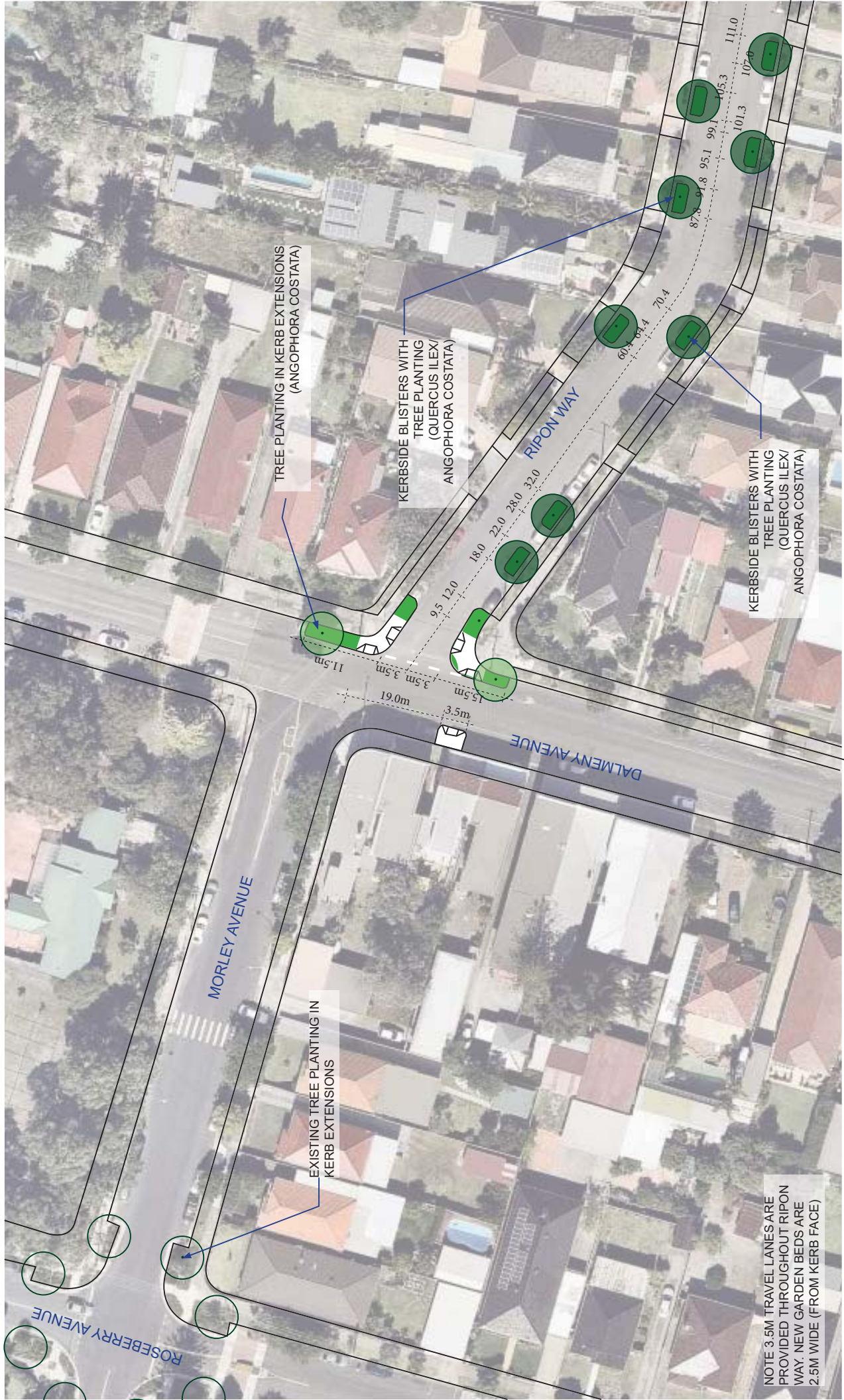
## **FINANCIAL**

Funds are available in the In-Road Tree Planting Program.

**ATTACHMENTS**

Traffic Treatment – Streetscape Improvements – Ripon Way Rosebery

James Lawton, Project Manager



NOTE 3.5M TRAVEL LANES ARE PROVIDED THROUGHOUT RIPON WAY. NEW GARDEN BEDS ARE 2.5M WIDE (FROM KERB FACE)

TREE PLANTING CONCEPT PLAN  
RIPON WAY, ROSEBERRY



